

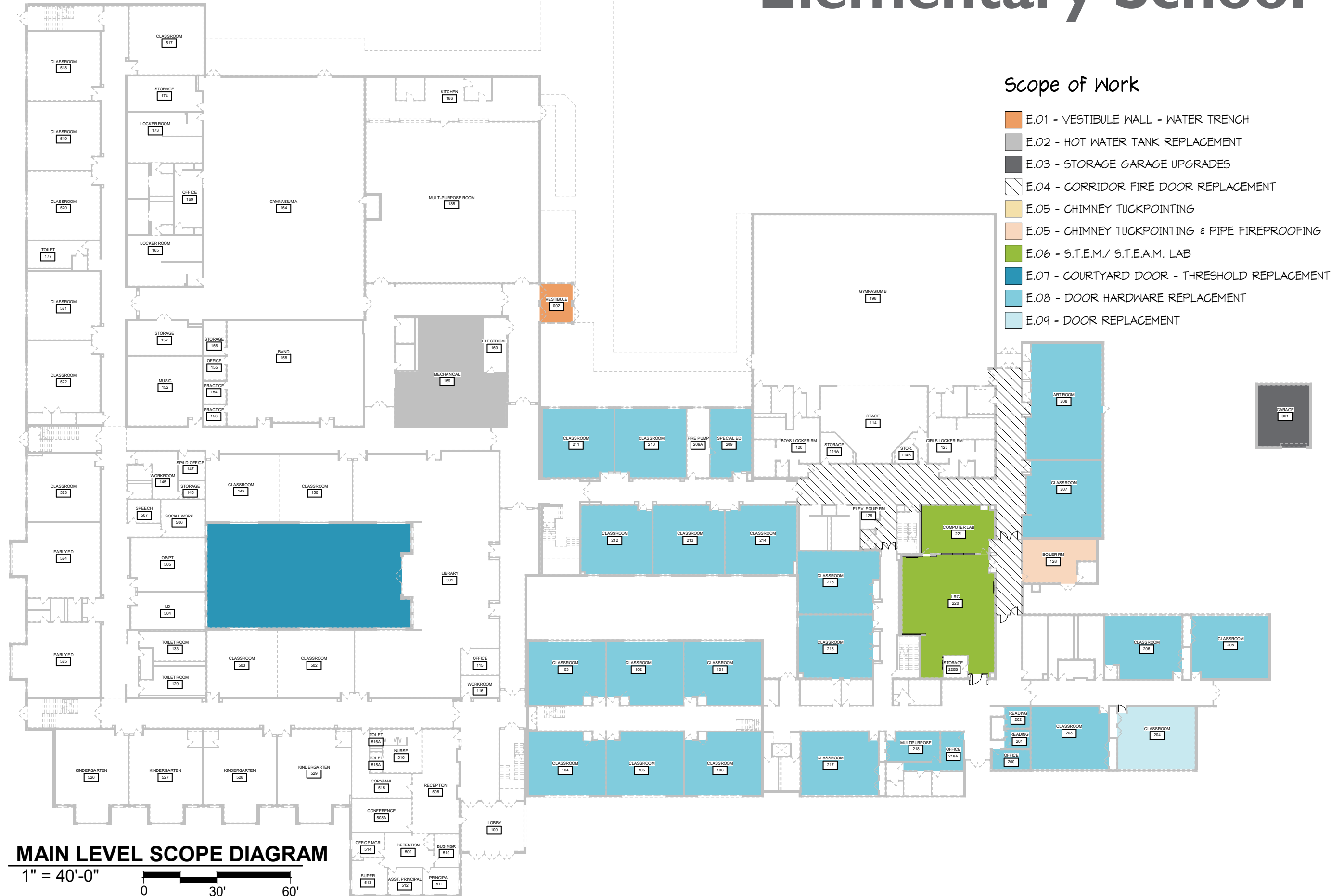


# Millburn Elementary School and Middle School Summer Upgrades





# Elementary School

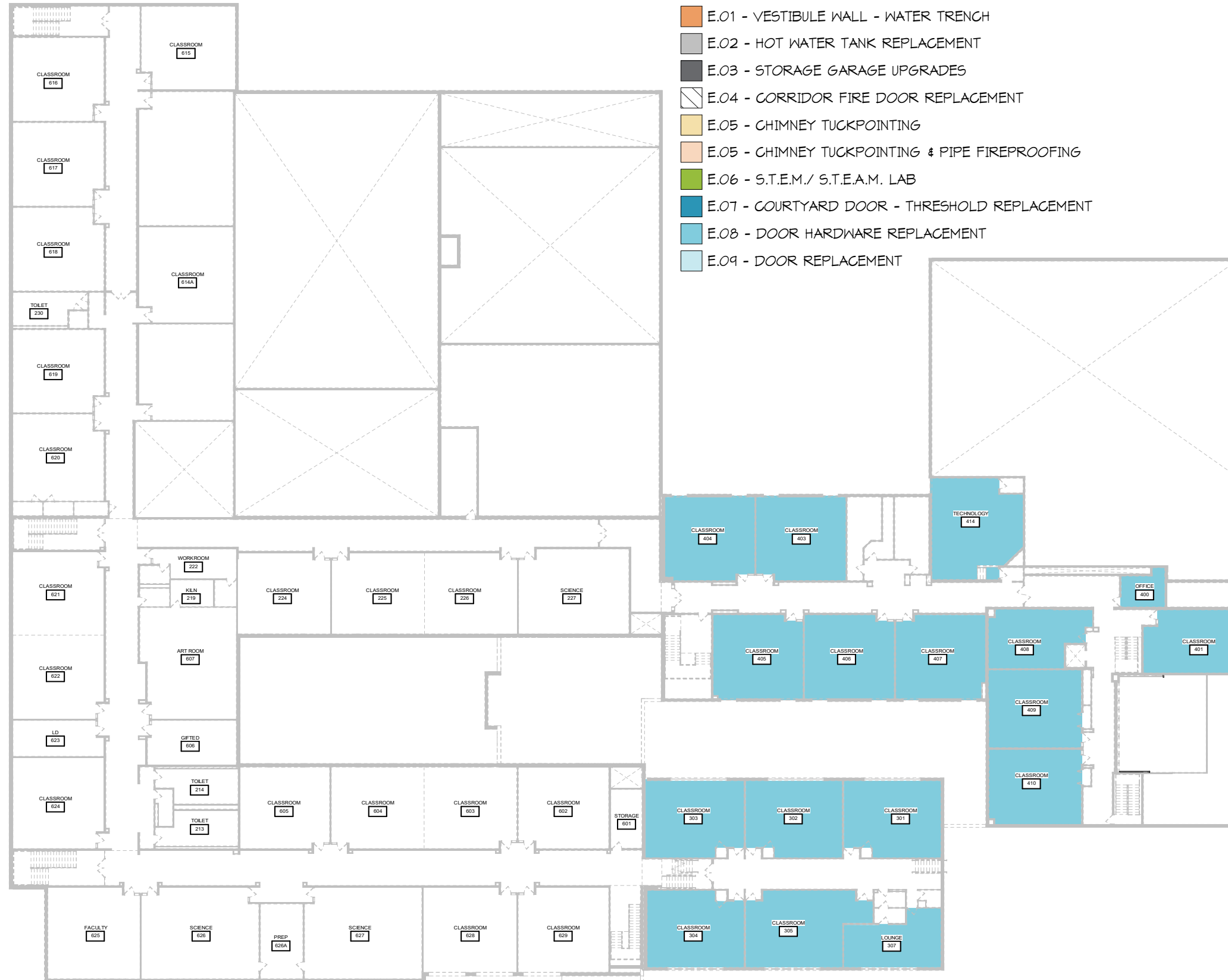




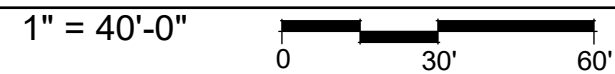
# Elementary School

## Scope of Work

- E.01 - VESTIBULE WALL - WATER TRENCH
- E.02 - HOT WATER TANK REPLACEMENT
- E.03 - STORAGE GARAGE UPGRADES
- E.04 - CORRIDOR FIRE DOOR REPLACEMENT
- E.05 - CHIMNEY TUCKPOINTING
- E.05 - CHIMNEY TUCKPOINTING & PIPE FIREPROOFING
- E.06 - S.T.E.M./ S.T.E.A.M. LAB
- E.07 - COURTYARD DOOR - THRESHOLD REPLACEMENT
- E.08 - DOOR HARDWARE REPLACEMENT
- E.09 - DOOR REPLACEMENT

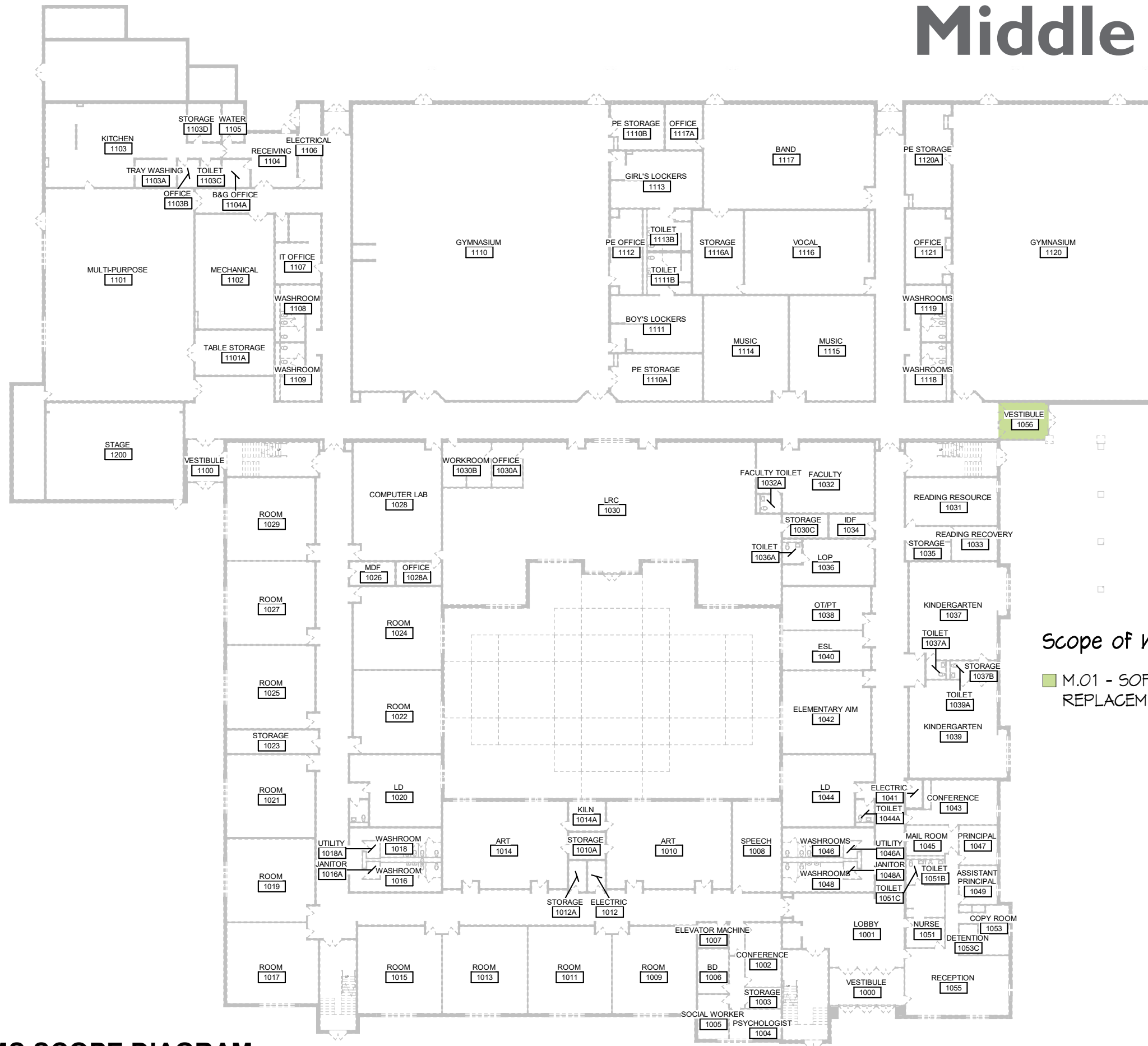


**UPPER LEVEL SCOPE DIAGRAM**





# Middle School



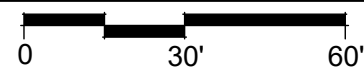
## Scope of Work

- M.01 - SOFFIT REMOVAL AND REPLACEMENT



## MS SCOPE DIAGRAM

1" = 40'-0"





# 2-5 Playground

MILLBURN SCHOOL 5-9 Playground

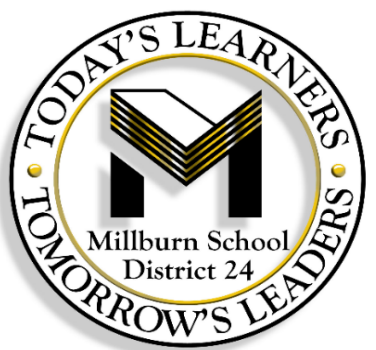
Millburn IL

2018



**FOR KIDS  
AGES  
2-5  
YEARS**

- 2-5 Playground Structure
- Roof for Shade
- Variety of climbers for different abilities
- TenSpin for 10 users
- 6' Buddy Bench
- bongo steppers





# 5-12 Playground

MILLBURN SCHOOL 5-9 Playground

Millburn IL

2018



- 5-12 Playground Structure
- Roof for Shade
- Variety of climbers for different abilities
- TenSpin for 10 users
- Reflex for 28 users
- 6' Buddy Bench (2)
- 5 Belt seats and 1 ADA swing seat
- Balanace beam, and bongo steppers

**FOR KIDS  
AGES  
5-12  
YEARS**





# S.T.E.M. Lab

## ELECTRICAL SYMBOL KEY

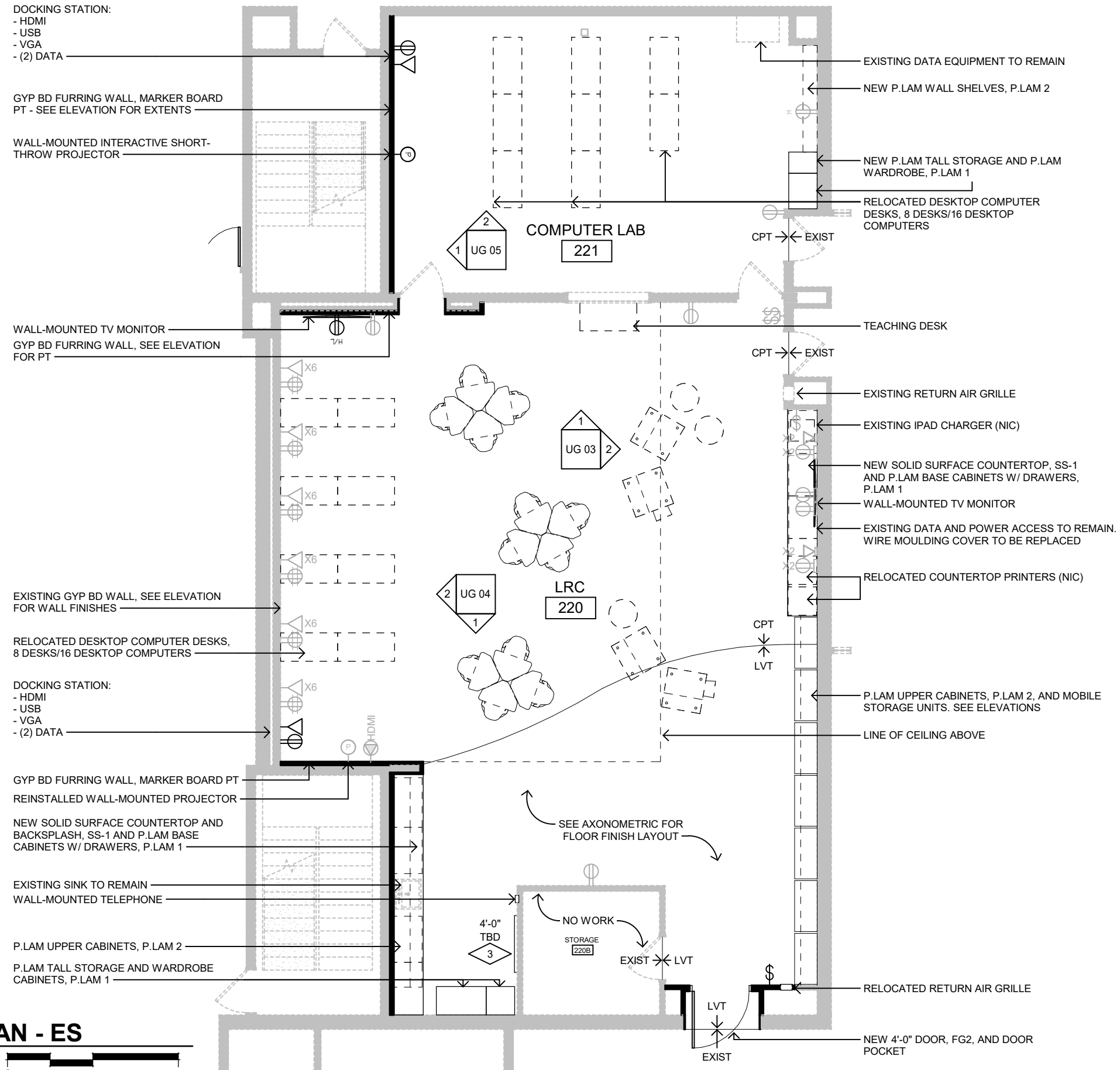
- DUPLEX RECEPTACLE (HIGH AND/OR LOW)
- DUPLEX RECEPTACLE
- DUPLEX GFCI RECEPTACLE
- DOUBLE DUPLEX RECEPTACLE
- EMERGENCY POWER RECEPTACLES
- SURFACE MOUNT DEVICES
- SPECIAL PURPOSE OUTLET
- SINGLE LIGHT SWITCH
- DOUBLE LIGHT SWITCH
- OCCUPANCY SENSING LIGHT SWITCH
- WALL OR CEILING PROJECTOR
- TV OUTLET (HIGH AND/OR LOW)
- VOICE WALL OUTLET
- DATA OUTLET (# OF DROPS INDICATED)
- DATA OUTLET CEILING & WIRELESS DATA ACCESS POINT
- FIRE ALARM W/STROBE AND HORN
- SECURITY - CARD READER
- SECURITY - CAMERA

## FINISHES:

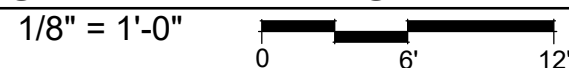
FLOOR: CPT / LVT  
 CEILING: EXISTING TO REMAIN, ACT CLOUDS  
 WALLS: FURRING AS NOTED / PT  
 CASEWORK: P.LAM / S.S. COUNTERTOP  
 LIGHTING: PENDANTS  
 WINDOWS: N/A  
 FURNITURE: NIC

## TECHNOLOGY:

- WALL-MOUNTED TV MONITORS
- INTERACTIVE SHORT-THROW PROJECTOR
- HDMI, USB, VGA, (2) DATA



## S.T.E.M. PLAN - ES





# S.T.E.M. Lab - Axonometric

